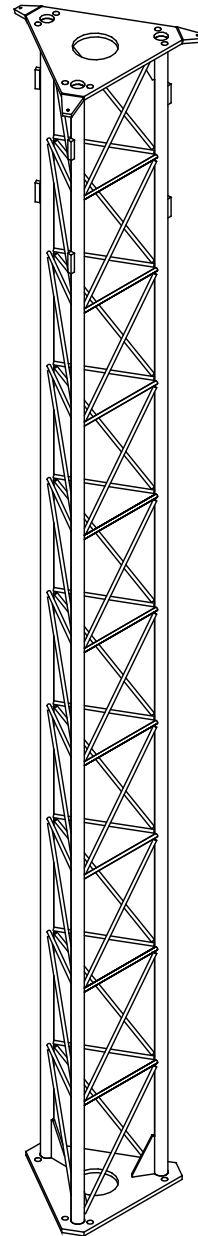
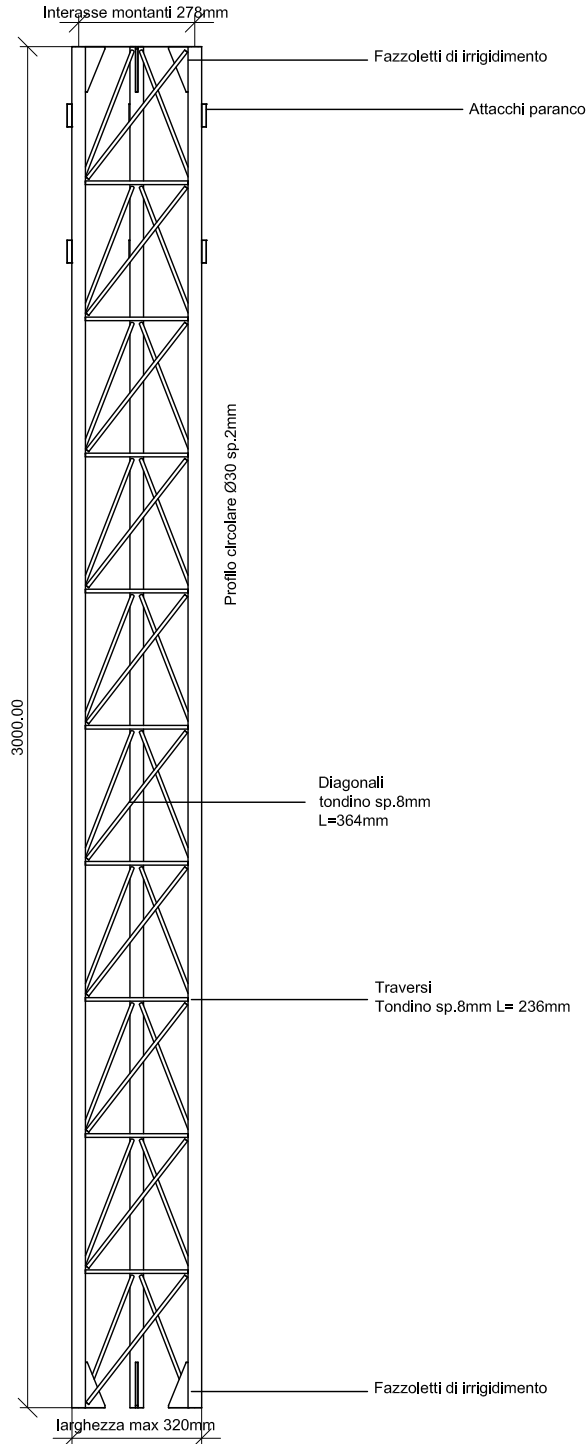
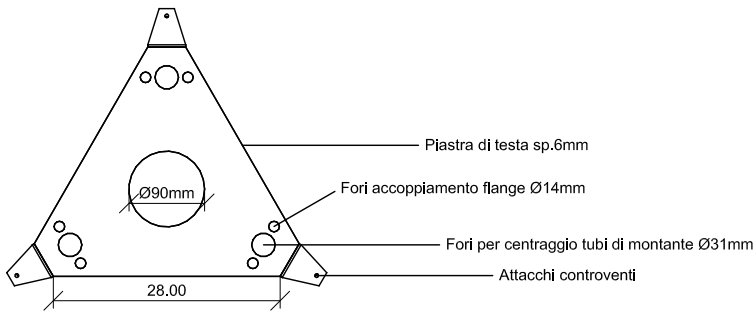
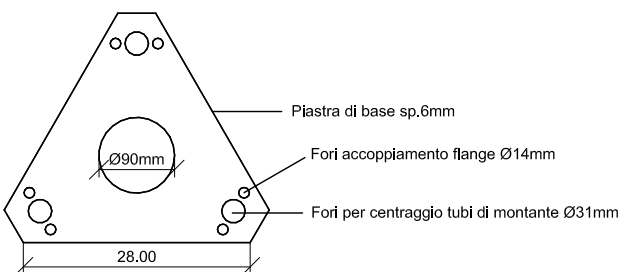


**SCHEMA TECNICA**  
**TRALICCIO TRIANGOLARE**  
**MONTANTE 30mm**  
**CODICE 135.0004**



PESO = 30 KG



**CARATTERISTICHE STATICHE SEZIONE**  
**(3 TUBI Ø 30 - 2mm)**

A = 5,28 cm<sup>2</sup>  
J = 627 cm<sup>4</sup>  
W = 27 cm

Tubi (montanti)	S 235 JR – EN 10025/95
Tondini (greche)	S 235 JR – EN 10025/95
Tipo di protezione	zincatura a caldo - UNI EN ISO 1461