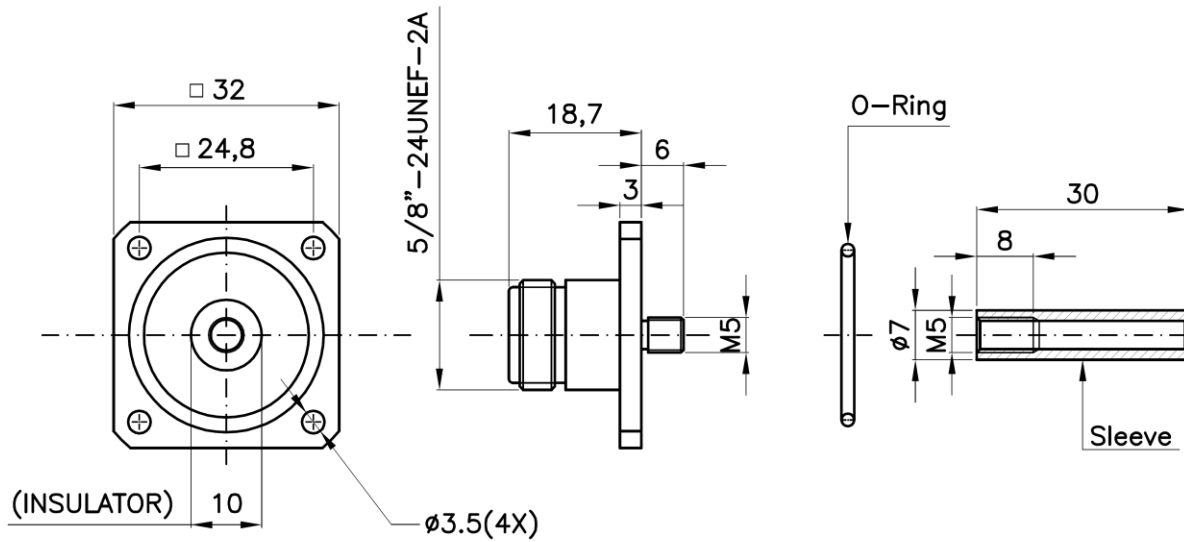


CONNETTORE N F FLANGIA QUADRA A SALDARE 32x32mm



SPECIFICATIONS

INTERFACE DIMENSIONS
IMPEDANCE
CAPTURED CENTRAL CONTACT

ACC. TO SPEC. CECC 22210 ; IEC 60169-16
50 Ω

MATERIAL AND FINISHINGS

BODY
SLEEVE
CENTRAL CONTACT
INSULATOR
GASKETS

BRASS-TERNARY ALLOY PLATED
BRASS-SILVER PLATED
SPRING BRONZE-SILVER PLATED
PTFE
SILICONE RUBBER