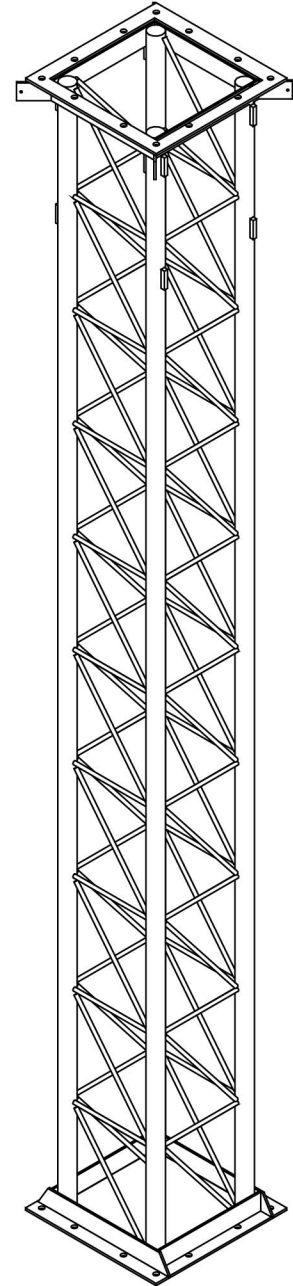
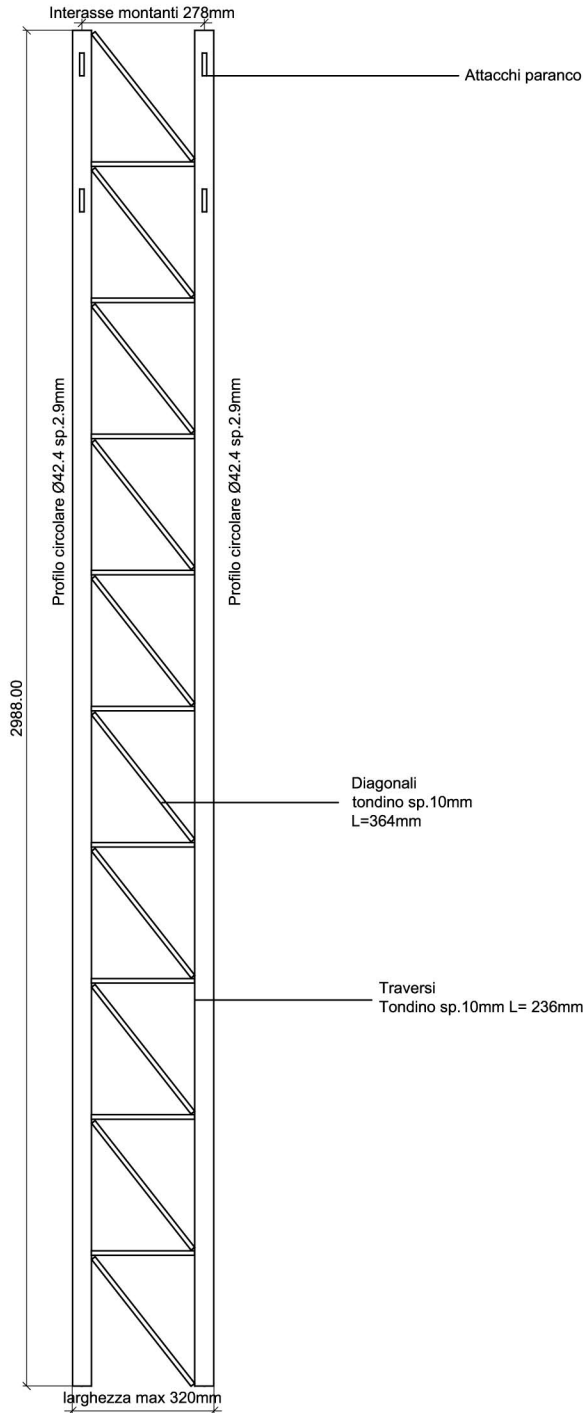
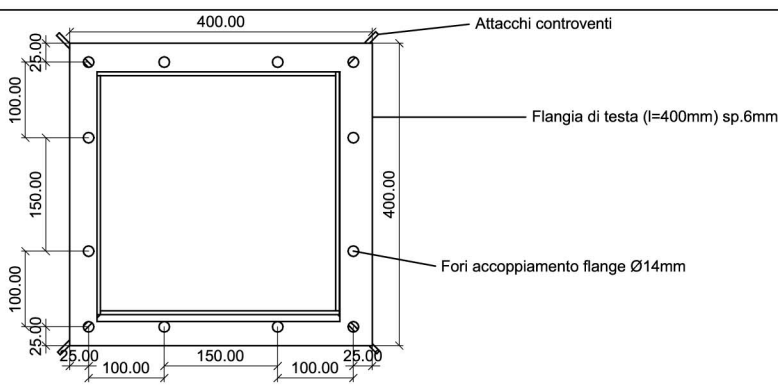
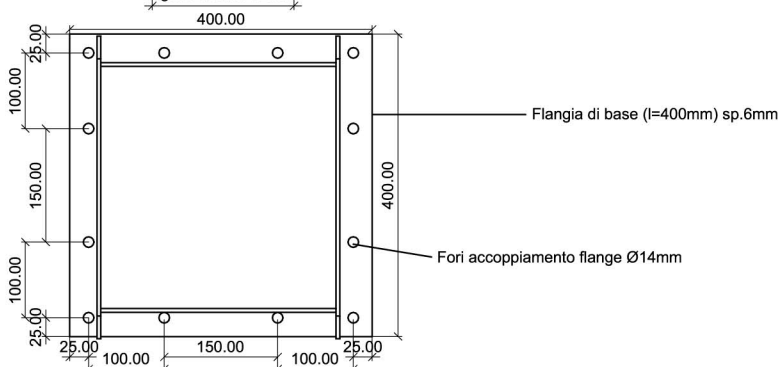


SCHEMA TECNICA
TRALICCIO QUADRANGOLARE
CODICE 135.0006



PESO = 64 KG



CARATTERISTICHE STATICHE SEZIONE
(4 TUBI Ø 42.4 - 2.9mm)

A = 14,8 cm²
J = 3.715 cm⁴
W = 116 cm³

Tubi (montanti)	S 235 JR – EN 10025/95
Tondini (greche)	S 235 JR – EN 10025/95
Tipo di protezione	zincatura a caldo - UNI EN ISO 1461